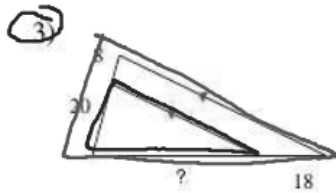
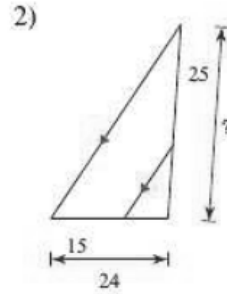
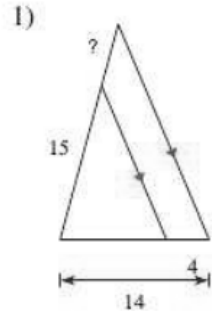


Proportional Parts in Triangles and Parallel Lines

Find the missing length indicated.



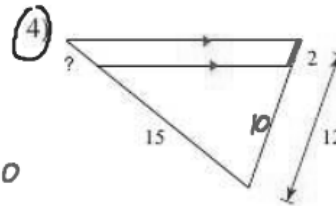
$$\frac{20}{x} = \frac{28}{x+18}$$

$$28x = 20(x+18)$$

$$28x = 20x + 360$$

$$8x = 360$$

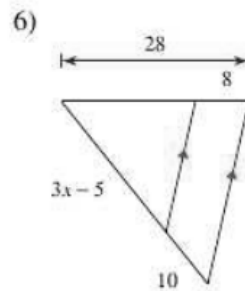
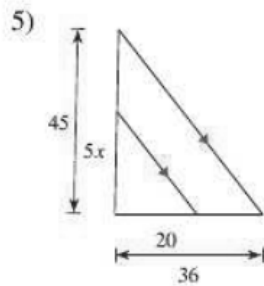
$$x = 45$$



$$\frac{15}{10} = \frac{x+15}{12}$$

$$\frac{15}{x+15} = \frac{10}{12}$$

Solve for x.



$$180 = 10x + 150$$

$$30 = 10x$$

$$x = 3$$

Find the missing length indicated.

